

# Deployment Document

---

---

GISCAD 2020 MIGRATION

---

## PROJECT OVERVIEW

The purpose of the document is to guide users to deploy GISCAD 2020 environment.

This document describes the installation procedure, pre-requisites for the tool and working procedure for the tool.

## PURPOSE OF THIS DOCUMENT

This document summarizes the steps involved in deployment of GISCAD 2020 . It explains the deployment and initial configuration procedures that are required for this tool.

## PREREQUISITES

- Licensed AutoCAD 2020
- Licensed RealDWG 2020
- Windows 10 – 64bit machine
- Read/Write/Execute permission to C:\ACAD2020\_GISCAD folder

## INSTALLATION OVERVIEW

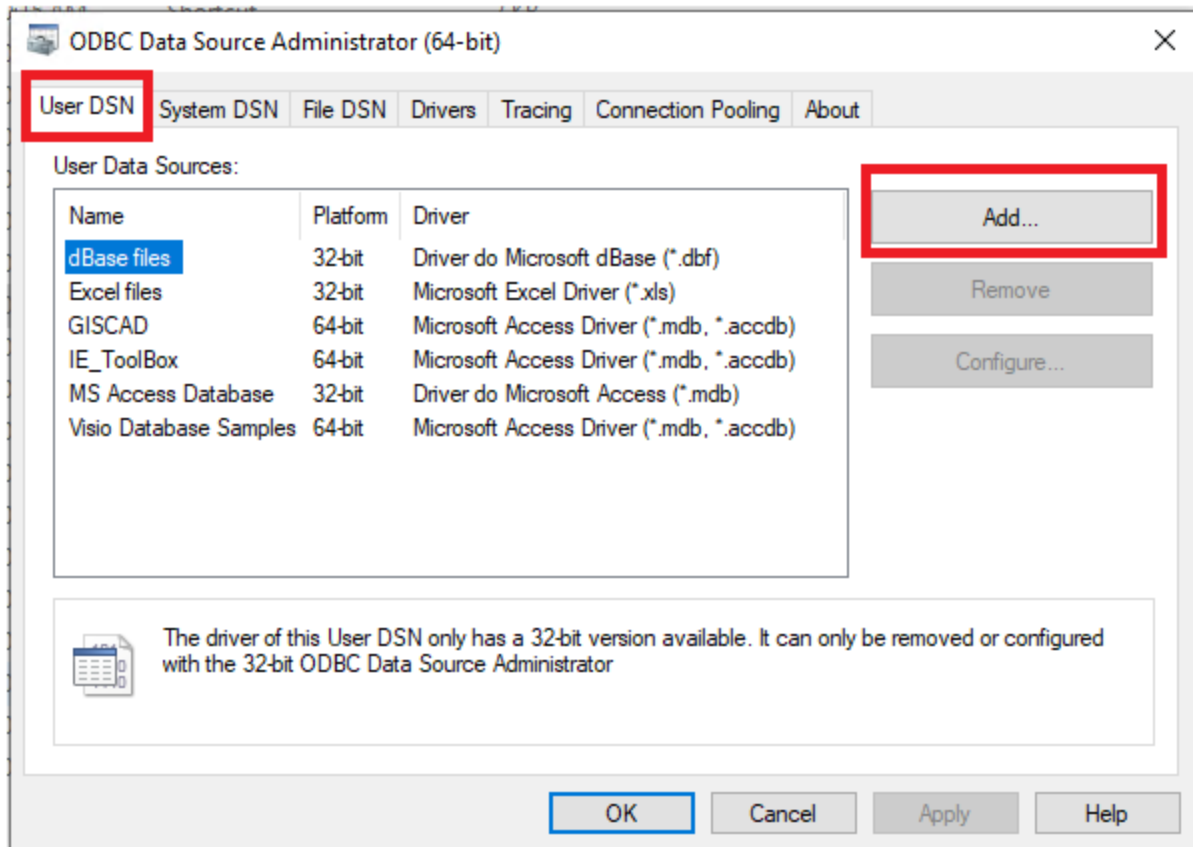
In this delivery, we've created GISCAD 2020 environment. The following are the installation steps.

**Step 1** Place the folder “ACAD2020\_GISCAD” in C:

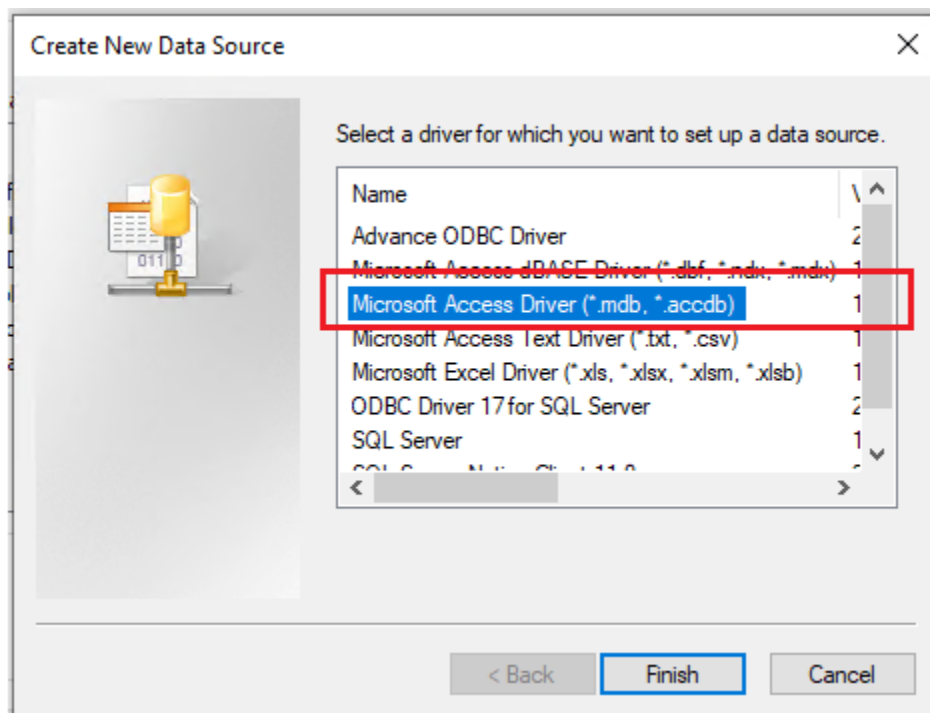
**Step 2** Run “AccessDatabaseEngine\_x64 - 2010.exe” from C:\ACAD2020\_GISCAD\Database Runtime\

**Step 3** Open Control Panel, Select System and Security, Open Administrative Tools and select “ODBC Data Sources (64-bit)”. The following dialog will be displayed.

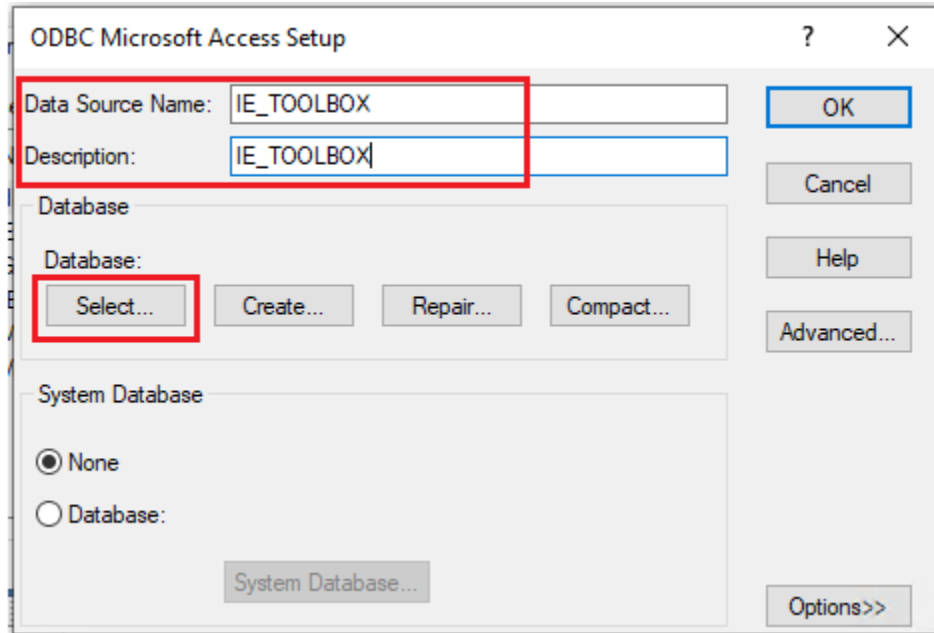
**Step 4** Select User DSN tab and click Add button.



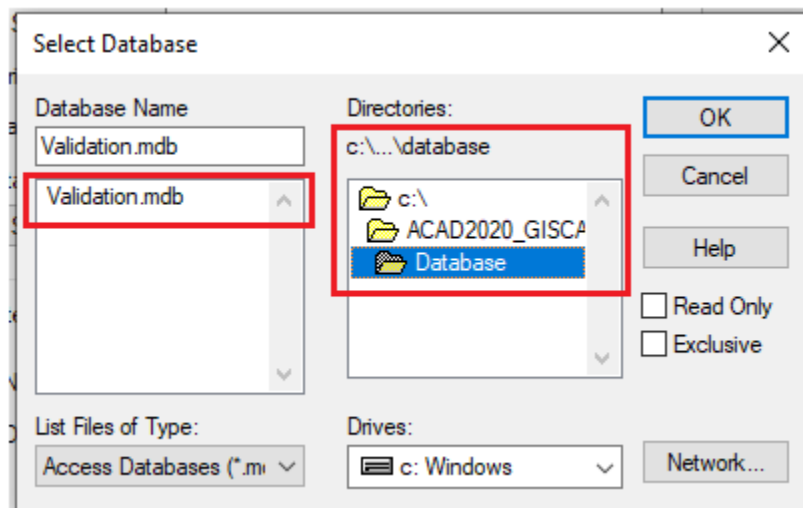
**Step 5** Select one of the MS Access drivers and the Finish button.



**Step 6** Enter Data Source Name 'IE\_Toolbox', and a description and then click 'Select' button



**Step 7** Select "C:\ACAD2020\_GISCAD\Database\validation.mdb" and click OK.



User DSN is now setup.

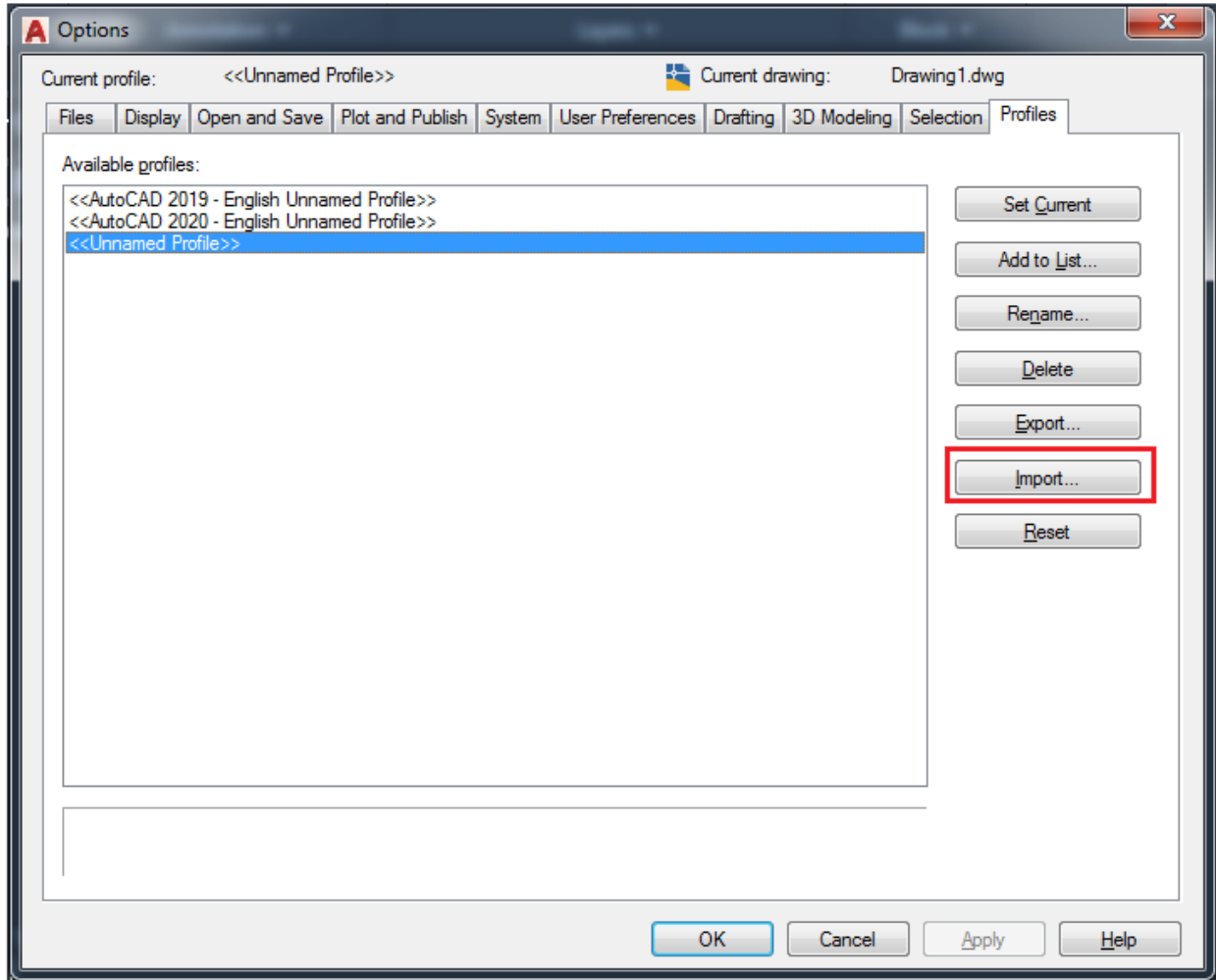
**Step 8** For System DSN, Follow the above steps from Step 3 to Step 7.

- At Step 4, Select "System DSN" tab
- At Step 6, Enter Data Source name as "GISCAD" and complete all steps

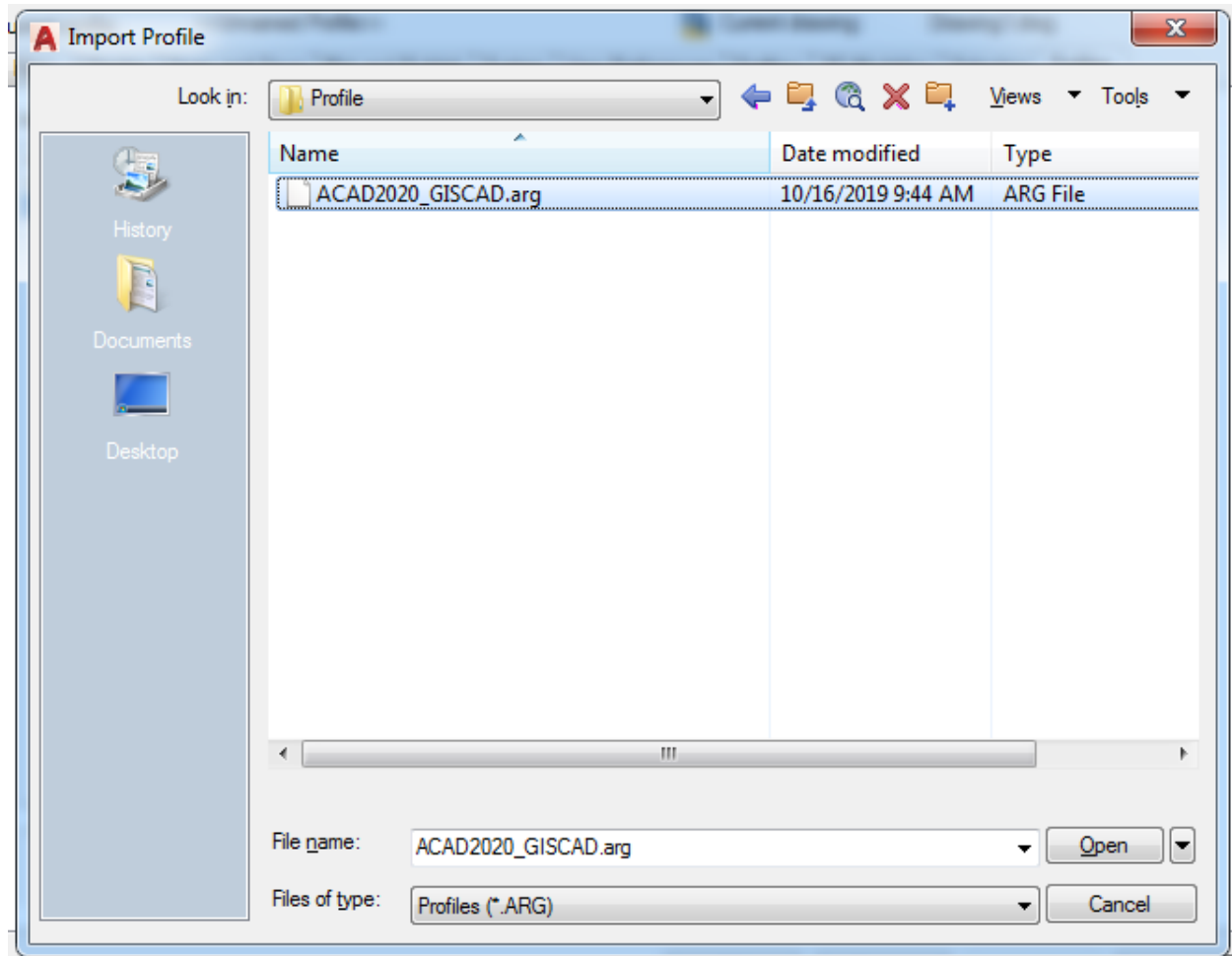
System DSN is now setup.

**Step 9** Once installation completed, Open AutoCAD 2020.

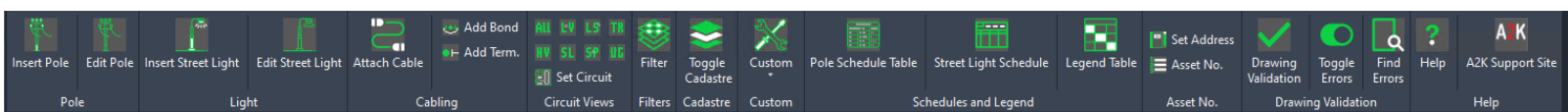
**Step 10** Open Options dialog and Click Import button



**Step 11** Select ACAD\_GISCAD.arg file from “C:\ACAD2020\_GISCAD\Profile\” and click Set Current.



**Step 12** Now, your AutoCAD window will show the GISCAD Toolbars, Ribbons and Tool Palettes



**-END of Document.**